

P.D.S.

- Grounding -

(CTI-TT-PDS-102\_A04)



# PRODUCT DATA SHEET

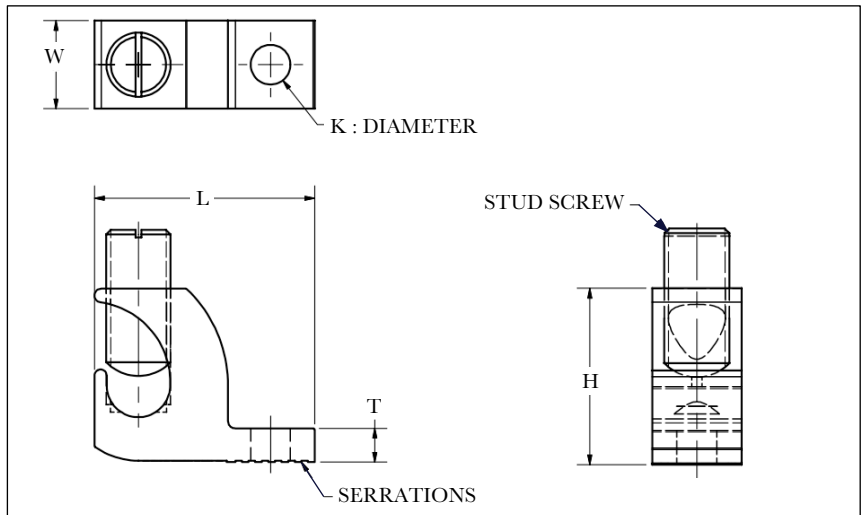
## TTA-GRNDCLAMP Grounding Clamp



CT Innovations Tray Grounding Clamp TTA-GRNDCLAMP is a reliable and convenient ground solution for TOUGHTray cable ladder. Designed for strength and conductivity it provides easy installation to TOUGHTray I-strut beam channel allowing for continuous runs of conductor cable and terminations.

Copper tin-plated body provides excellent conductivity and weatherability. Serrations on the underside of the clamp help prevent rotation during installation. Supplied complete with hardware for installation to the TOUGHTray system.

- Copper body
- Tin-plated finish
- 1/4 in. hardware included.
- Serrations on underside of tongue.
- UL listed.



Part Number	TTA-GRNDCLAMP
Material	Copper
Finish	Tinned
Conductor Range	6-250 KCMil
Rated Temperature	194° F (90° C)
Rated Voltage	600 V
Stud Size	9/16-18 in.
Stud Head	1/4 in. Hexagonal
Width (W)	0.80 in. (20 mm)
Height (H)	1.79 in. (46 mm)
Length (L)	2.20 in. (56 mm)
Thickness (T)	0.30 in. (8.0 mm)
Hole Diameter (K)	0.33 in (8.5 mm)
Mounting Hardware Size	1/4 in. Hexagonal
Certifications	UL Listed